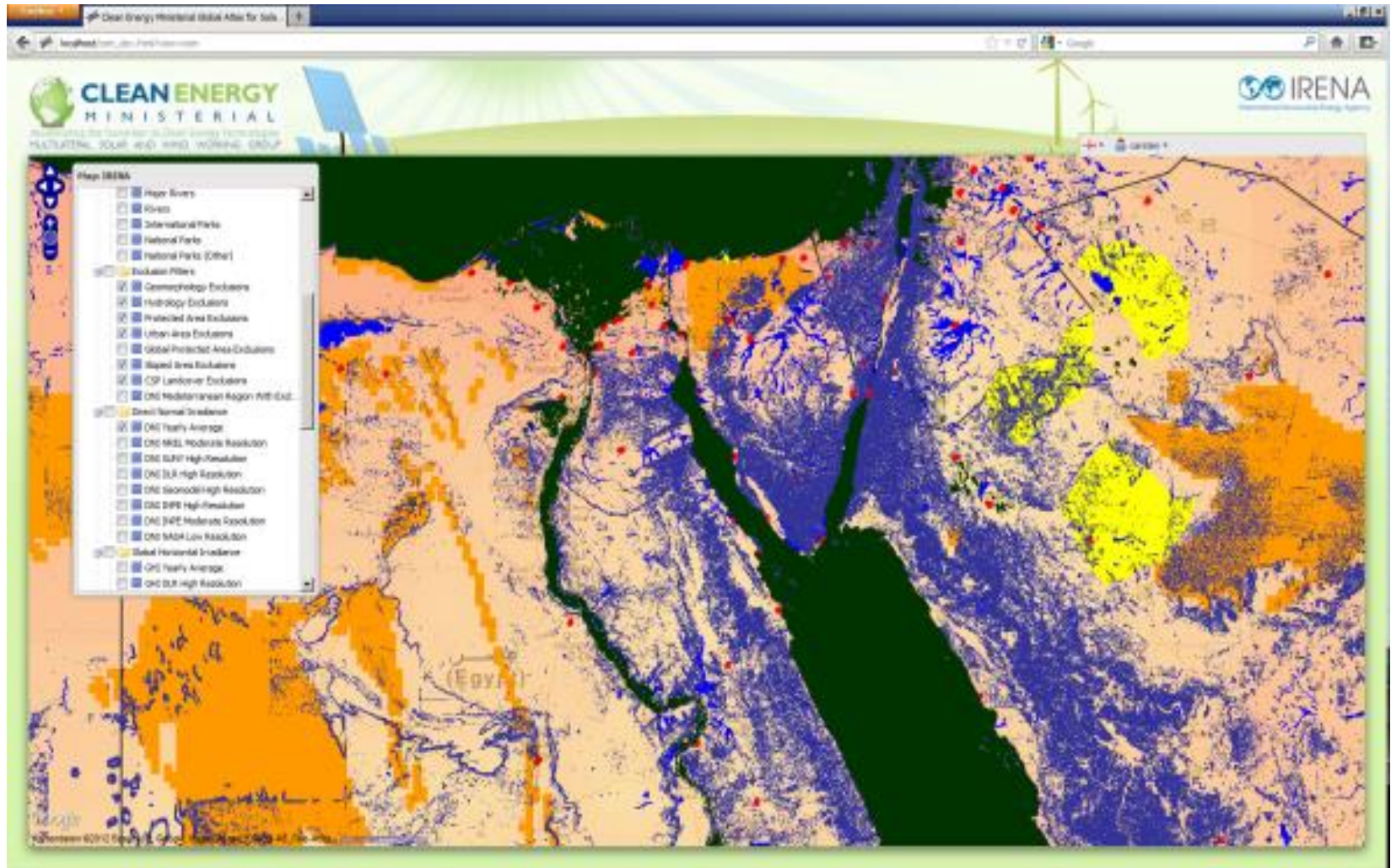


IRENA Knowledge Gateway

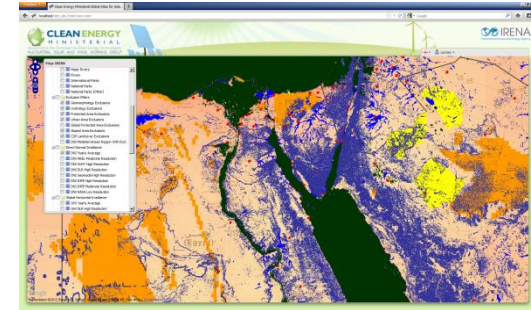
- **Objective:** Make diverse renewable energy **knowledge accessible to all users** from a single interface, **linking IRENA products** and **collecting new data** and information through partners and membership
- **Key components:**
 1. Renewable energy statistics
 2. Global Atlas of renewable energy potentials
 3. IRENA Renewable Energy Learning Partnership (IRELP)
 4. Renewable energy policies and best practices
 5. Renewable Costing Alliance
 6. Global investment dynamics
 7. **Coalition for action on social acceptance**



Capturing diverse data

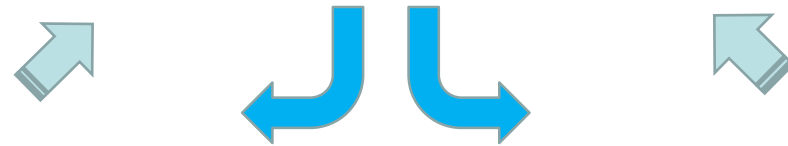
Category / Sub-Category	Proposed Data and Information, FBF Driven	Why we need this data	Availability in Morocco / Potential Sources
Macro-economic situation			
Energy Sector			
Electricity Sector			
Renewable Energy			
4.1 Strategy / Policy/Targets/ Projects/ Institutions	<p>Strategy/Legal & Institutional framework/Decrees</p> <p>Specific RE Policy/ Sectorial Policy/ Standards/ Customs policy / Electricity Export Policy, Tax/Fiscal policies / Policies regarding access to modern energy services; administrative procedure (Authorizations)</p> <p>Targets by technologies and sectors (including power generation).</p>	<p>Entry point information for developers and investors. Enabling environment for IPPs</p> <p>National and provincial policies for renewable energy in the country</p> <p>A well-documented approval process would reduce regulatory hurdles seen as "commercial and political risk" or provide greater confidence in approaching such hurdles</p> <p>Useful to know for developers and investors as they have to</p>	<p>MoE/SG of the Government</p> <p>In Morocco, RE information was scattered among Ministry of Energy/ Agriculture, Industry, Economy</p> <p>Provincial level information,</p> <p>MoE/Utility/ MASEN/ ADEREE</p>

Creating new IRENA products



IRENA Knowledge Gateway

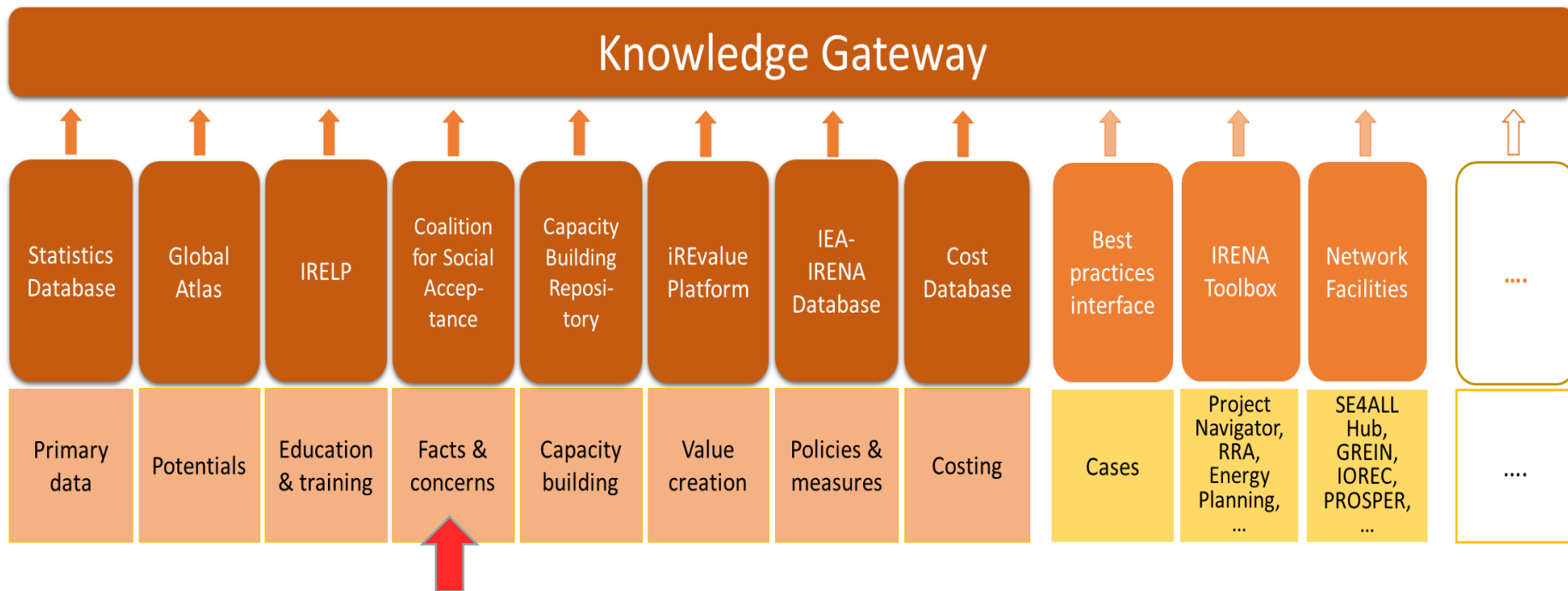
Statistics	Policies
Potential	Capacity building
Energy market	Projects
Technologies	Research
Socioeconomics



Utilized by stakeholders



Towards the centre of excellence



- IRENA will design a single online portal for all IRENA's analytical work and global renewable energy data and information.
- The Gateway will allow the user to easily locate and extract information in a user-friendly format.

Thank you

Hugo Lucas
h Lucas@irena.org